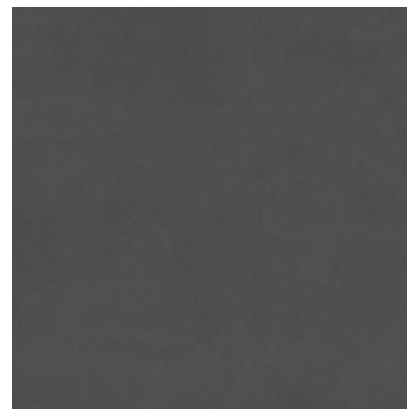


## ZUHAUSE GRAPHIT LAPATTO RECT 90X90

REFERENCE	SIZE (cm)	THICKNESS (mm)	GROUP
<b>A039713</b>	90X90	10,00	PC BIA GL



### DIMENSIONS AND SURFACE PROPERTIES

Size, thickness, side straightness, flatness, orthogonality	UNE-EN 14411	It accomplished all requirements
---	--------------	----------------------------------

### PHYSICAL PROPERTIES

Water absorption capacity	EN ISO 10545-03	< 0,5%
Flexion resistance	EN ISO 10545-04	=> 35 N/mm <sup>2</sup>
Abrasion resistance (glazed Ceramic)	EN ISO10545-07	II
Thermal shock resistance	EN ISO 10545-09	It stands the test
Cracking resistance	EN ISO 10545-11	It stands the test
Frost resistance	EN ISO 10545-12	It stands the test

### CHEMICAL PROPERTIES

Resistance to acids	EN ISO 10545-13	GHB
Resistance to alcalis	EN ISO 10545-13	GHB
Resistance to cleaning products	EN ISO 10545-13	GHB
Resistance to chemical products in swimming pool water	EN ISO 10545-13	GHB
Stains resistance	EN ISO 10545-14	5